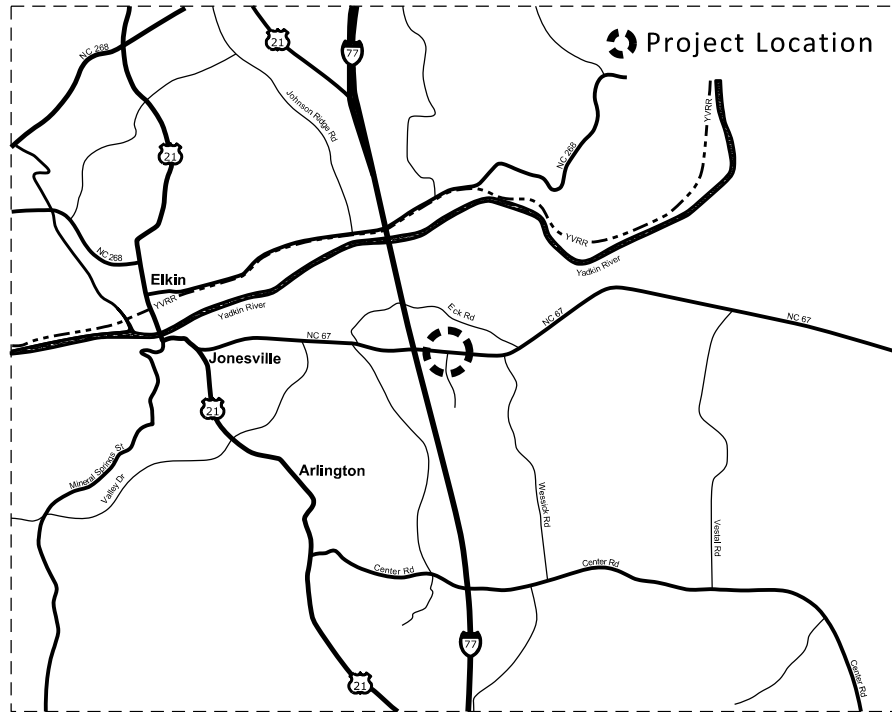




HIGHWAY LANDSCAPE DEVELOPMENT PROJECT



T.I.P. #	STATE PROJECT W.B.S. #	SHEET #	SHEET # TOTAL
- - -	3711.3.22	L1	5
FED. PROJ. #	DESCRIPTION		DIVISION
- - -	Enhancement		11



Summary of Quantities
1 Year Establishment

DES	SEC	QTY	UNIT	KEY	BOTANICAL NAME	COMMON NAME	SIZE	CALIPER	FURNISH	A.S.N.S.	REMARKS
Trees											
L	1670	1	ea	CC	<i>Cercis canadensis</i> 'Appalacian Red'	Appalacian Red Eastern Redbud	7-8'	2"	B&B	1.3	As Shown
L	1670	1	ea	CV	<i>Chionanthus virginicus</i>	Fringe Tree	5-6'	1 3/4"	B&B	1.2.3	As Shown
Shrubs											
L	1670	25	ea	JC	<i>Juniperus conferta</i> 'Blue Pacific'	Blue Pacific Shore Juniper	8-12"		#3 Cont	3.2.2	5' O.C.
L	1670	65	ea	RO	<i>Rosa</i> 'Meizorland'	White Drift Rose	8-12"		#3 Cont	5.2	2.5' O.C.
Grasses/Groundcovers/Perennials											
L	1670	14	ea	HO	<i>Hosta</i> 'Praying Hands'	Praying Hands Hosta	8-12"		#1 Cont	12.2.4	As Shown
L	1670	10	ea	MC	<i>Muhlenbergia capillaris</i>	Pink Muhly Grass	18-24"		#3 Cont	12.4	3' O.C.
L	1670	226	ea	PH	<i>Phlox subulata</i> 'Emerald Blue'	Emerald Blue Creeping Phlox			#sp4	12.4	2' O.C.
L	1670	136	ea	RG	<i>Rudbeckia fulgida</i> var. <i>sulvanti</i> 'Goldstrum'	Goldstrum Blackeyed Susan	12-18"		#1 Cont	12.3	18" O.C.
Other											
L	1670	52	CY		Addition of Soil						
L	1670	1	CY		Grading						
L	1670	11	ea		Boulders						
L	1670	45	CY		Mulch for Planting						Depth of 4"
L	1670	4	M/G		Water for Planting						
L	1670	3848	SY		Pre emergence Herbicidal Treatment						
L	1670	3848	SY		Post emergence Herbicidal Treatment						

CONVENTIONAL SYMBOLS

- County Line
- City or Town Line
- Exist. Right of Way Line Marker
- Prop. Right of Way Line Marker (By Others)
- Prop Right of Way Line Marker (By Contract)
- Exist. Control of Access Line
- Prop. Control of Access Line
- Property Line
- Easement Line
- Slope Stake Line
- Exist. Fence
- Prop. Woven Wire Fence
- Prop. Chain Link Fence
- Exist. Road
- Prop. Road
- Guardrail
- Survey Line
- Denotes Line Equality
- Bridge
- Culvert
- Railroad
- Woods
- Exist. Telephone Pole
- Prop. Telephone Pole
- Tower Pole and Line
- Exist. Power Pole
- Prop. Power Pole
- Sanitary Sewer Line
- Water Line
- Gas Line
- Picnic Shelter
- Regeneration
- Reforestation

INDEX OF L SHEETS:

- L 1.0 - Title Sheet
- L 2.0 - Planting Details
- L 3.0 - Landscape Plan
- L 4.0 - Landscape Plan (Enlarged)
- L 5.0 - Details

PREPARED BY: KC DATE: 07/2015

REVISIONS

DATE	DESCRIPTION

Project: Jonesville NC-67 Roundabout



STATE OF
NORTH CAROLINA
DEPARTMENT OF TRANSPORTATION

LOCATION: Jonesville NC 67 Roundabout

TYPE of WORK: Enhancement

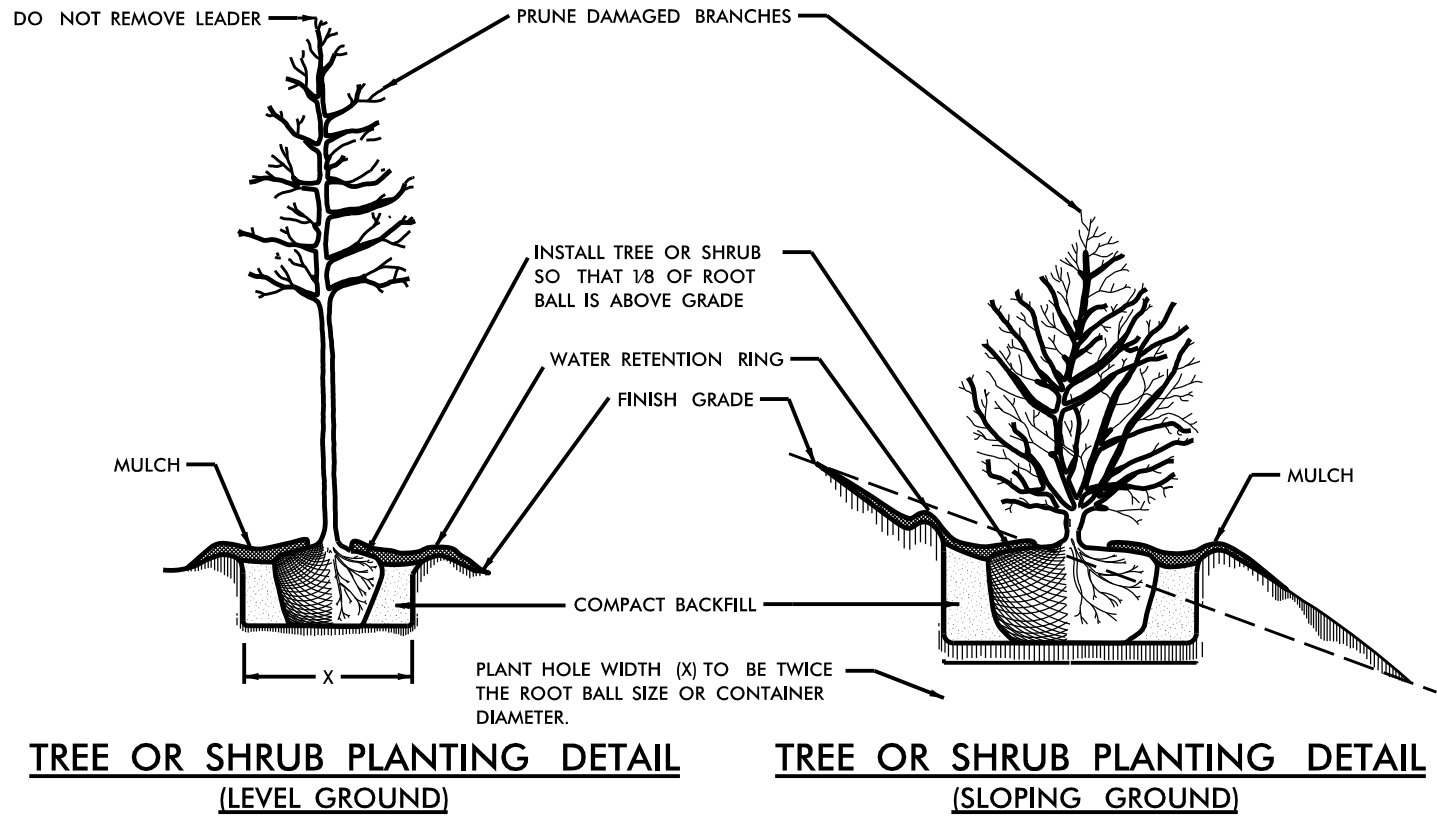
COUNTY: Yadkin County

2004 American Standard for Nursery Stock

2012 NCDOT STANDARD SPECIFICATIONS

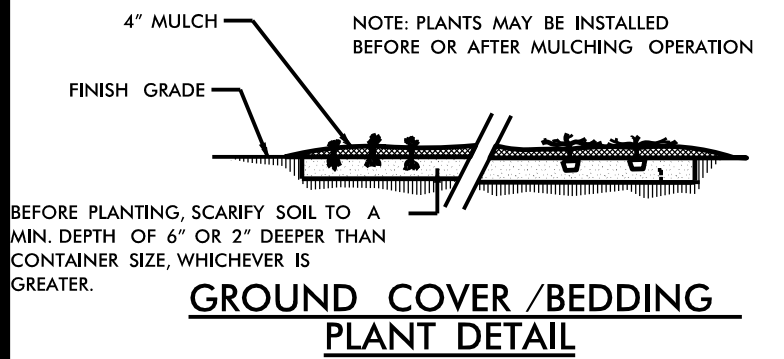
PREPARED IN THE OFFICE OF:
NCDOT- ROADSIDE ENVIRONMENTAL UNIT
LANDSCAPE DESIGN & DEVELOPMENT SECTION
1557 MAIL SERVICE CENTER
RALEIGH NC 27699 919-707-2920

\$\$\$\$\$SYTIME\$\$\$\$\$
\$\$\$\$\$DGN\$\$\$\$\$
\$\$\$\$\$USERNAM\$\$\$\$\$

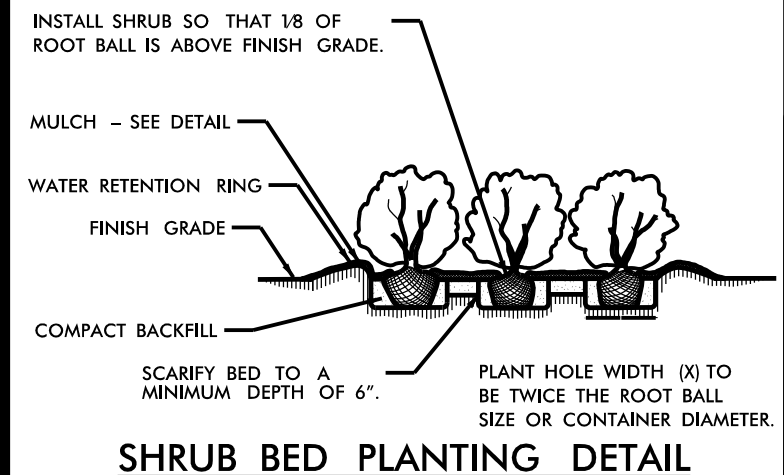


TREE OR SHRUB PLANTING DETAIL
(LEVEL GROUND)

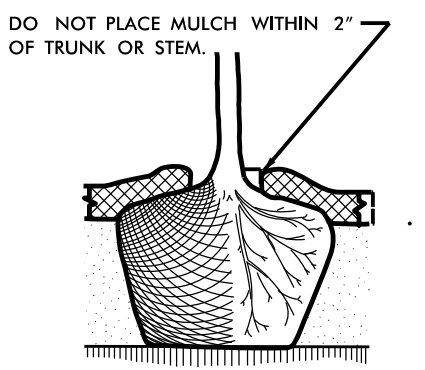
TREE OR SHRUB PLANTING DETAIL
(SLOPING GROUND)



GROUND COVER /BEDDING PLANT DETAIL

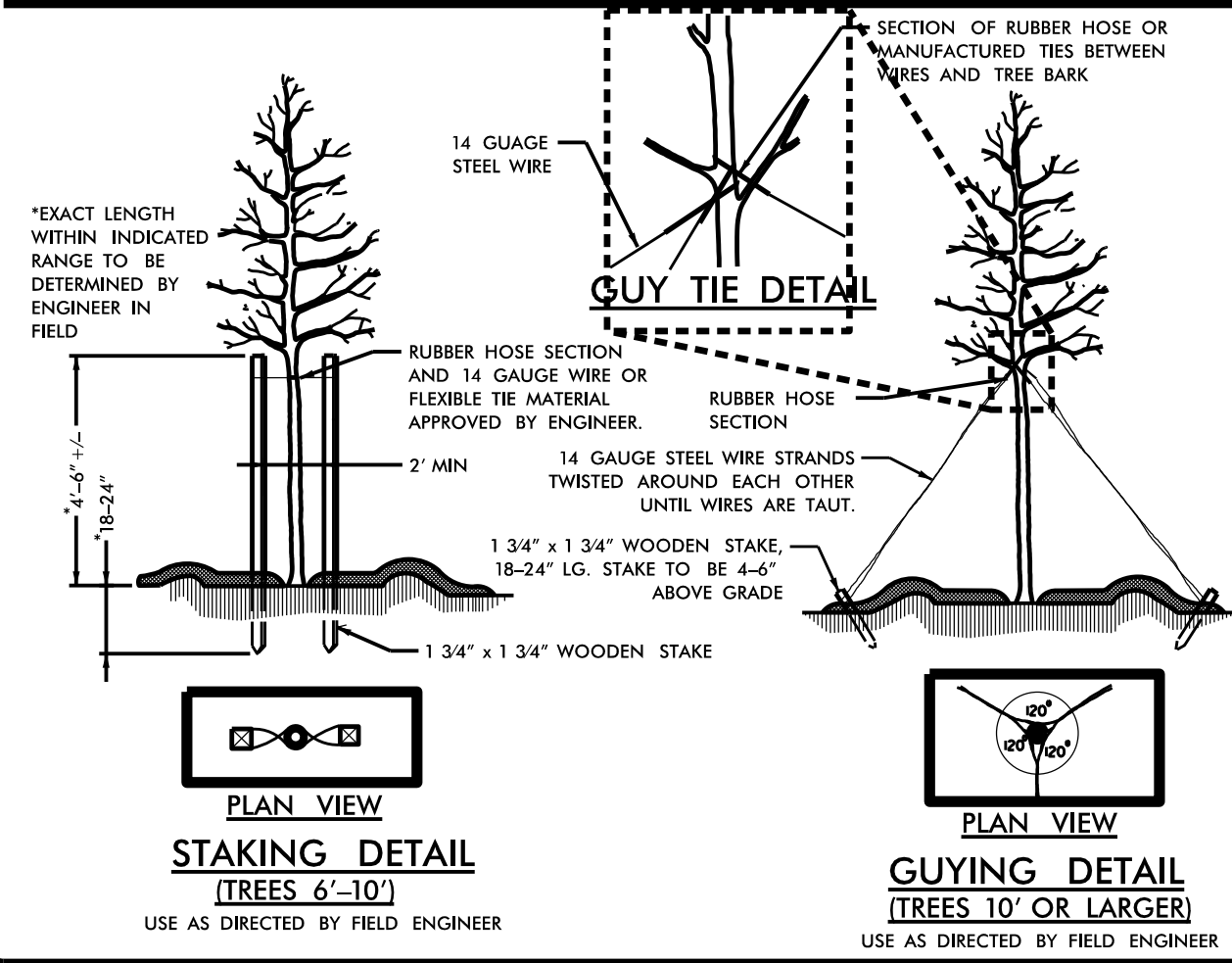


SHRUB BED PLANTING DETAIL



MULCH DETAIL

- NOTES:**
- ☛ SCHEDULE FOR PLANT HOLE SIZE: PLANT HOLE WIDTH (X) TO BE TWICE THE ROOT BALL SIZE OR CONTAINER DIAMETER.
 - ☛ SEE STANDARD SPECIFICATIONS FOR PLANT BED FUMIGATION AND HERBICIDAL TREATMENT.
 - ☛ APPLY FERTILIZER AT PLANTING TIME IN THE FORM OF A SLOW RELEASE PELLET OR TABLET. APPLY AT RATE RECOMMENDED BY MANUFACTURER. BOTH RATE AND FORMULATION MUST BE APPROVED BY FIELD ENGINEER PRIOR TO APPLICATION.
 - ☛ REMOVE WIRE BASKET AND FOLD BURLAP BACK FROM TOP OF ROOT BALL BEFORE BACKFILLING IS COMPLETE.
 - ☛ ALL PRUNING TO FOLLOW STANDARD ARBORICULTURAL PRACTICES AS SPECIFIED BY INTERNATIONAL SOCIETY OF ARBORICULTURE.
 - ☛ DO NOT ATTEMPT TO STRAIGHTEN A TREE THAT HAS BEEN PLANTED AT AN ANGLE WITH THE USE OF STAKING OR GUYING. DIG TREE AND REPLANT TO UPRIGHT POSITION.

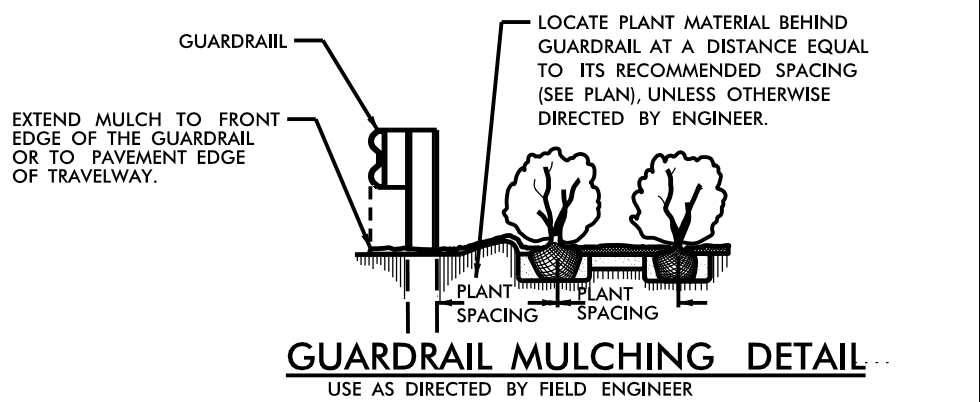


STAKING DETAIL
(TREES 6'-10')

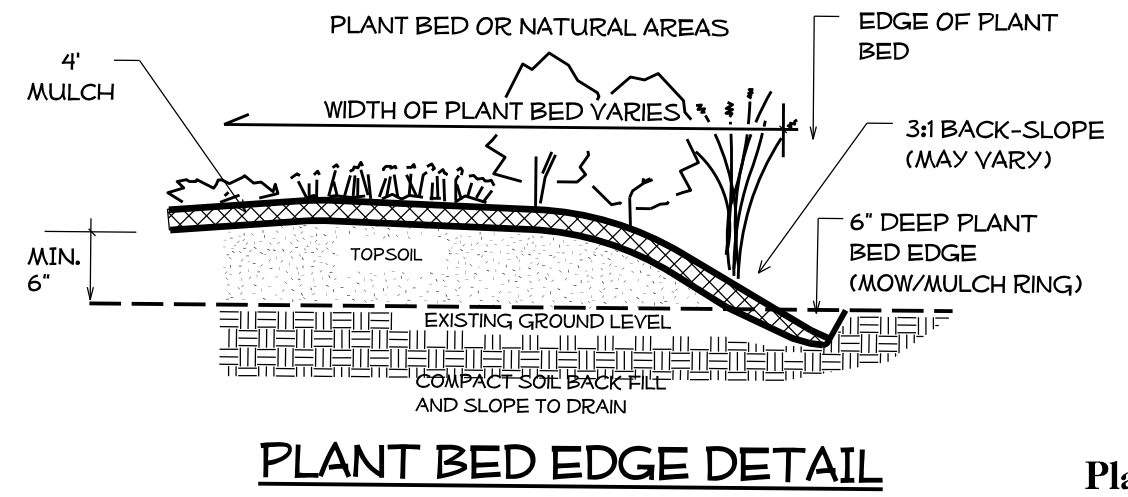
USE AS DIRECTED BY FIELD ENGINEER

GUYING DETAIL
(TREES 10' OR LARGER)

USE AS DIRECTED BY FIELD ENGINEER



GUARDRAIL MULCHING DETAIL
USE AS DIRECTED BY FIELD ENGINEER



PLANT BED EDGE DETAIL

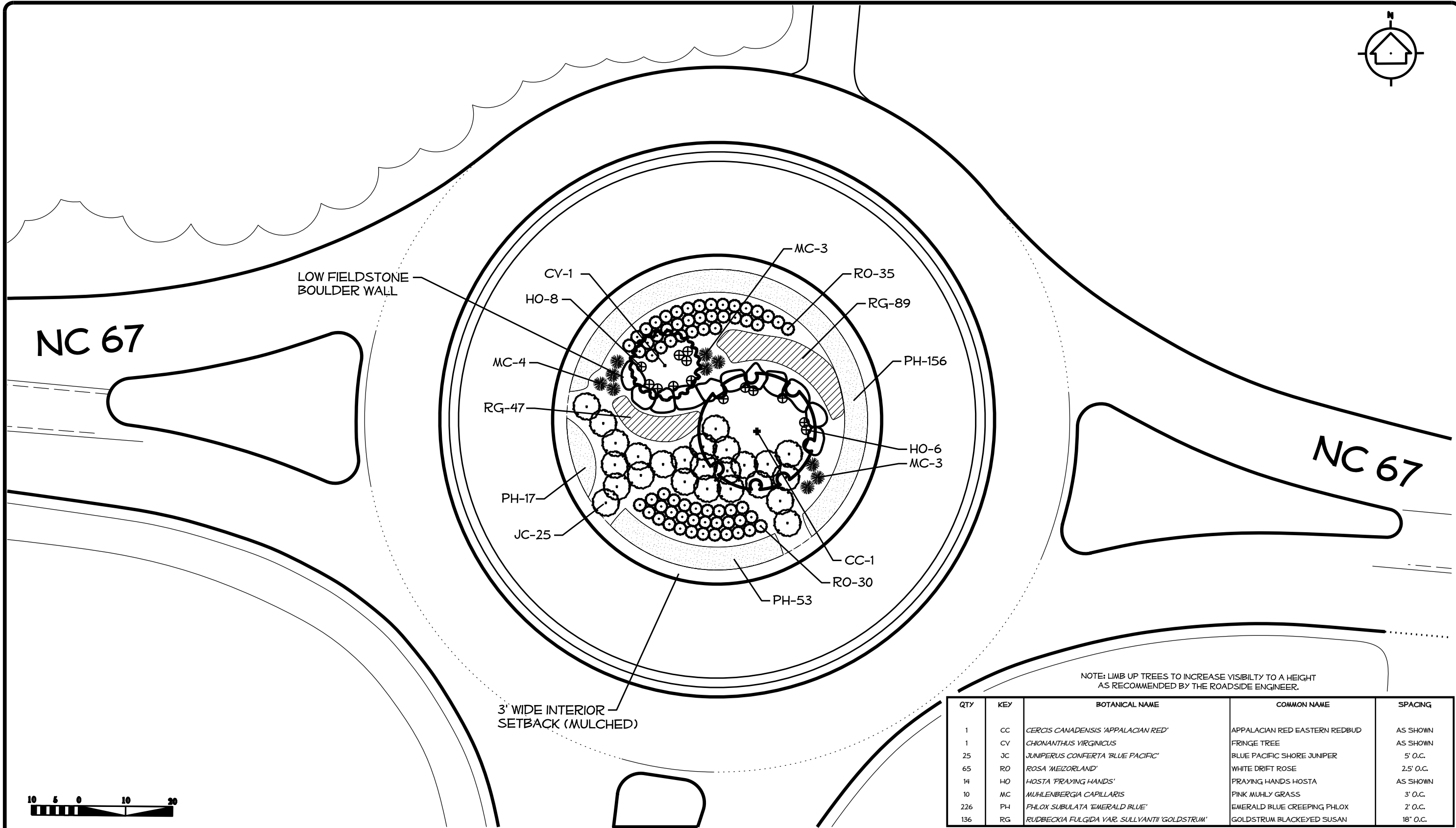
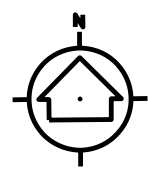
Planting Details

North Carolina Department of Transportation
 Roadside Environmental Unit
 Landscape Design & Development Section



PROJECT TITLE:
 Jonesville NC-67 Roundabout
 Yadkin County

Plans Drawn By:	Kyle Cooper
Scale:	AS NOTED
Date:	07 / 14 / 15
Sheet Description:	
L.P.#:	
Sheet #:	L-2



NOTE: LIMB UP TREES TO INCREASE VISIBILITY TO A HEIGHT AS RECOMMENDED BY THE ROADSIDE ENGINEER.

QTY	KEY	BOTANICAL NAME	COMMON NAME	SPACING
1	CC	<i>CERCIS CANADENSIS</i> 'APPALACIAN RED'	APPALACIAN RED EASTERN REDBUD	AS SHOWN
1	CV	<i>CHIONANTHUS VIRGINICUS</i>	FRINGE TREE	AS SHOWN
25	JC	<i>JUNIPERUS CONFERTA</i> 'BLUE PACIFIC'	BLUE PACIFIC SHORE JUNIPER	5' O.C.
65	RO	<i>ROSA</i> 'MEIZORLAND'	WHITE DRIFT ROSE	2.5' O.C.
14	HO	<i>HOSTA</i> 'PRAYING HANDS'	PRAYING HANDS HOSTA	AS SHOWN
10	MC	<i>MUHLENBERGIA CAPILLARIS</i>	PINK MUHLY GRASS	3' O.C.
226	PH	<i>PHILOX SUBULATA</i> 'EMERALD BLUE'	EMERALD BLUE CREEPING PHLOX	2' O.C.
136	RG	<i>RUDBECKIA FULGIDA</i> VAR. <i>SULLYANTII</i> 'GOLDSTRUM'	GOLDSTRUM BLACK'EYED SUSAN	18" O.C.

\$\$\$\$\$SYTIME\$\$\$\$\$
 \$\$\$SERVNAME\$\$\$\$\$

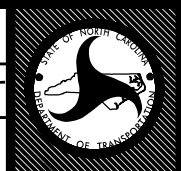


NCDOT - ROADSIDE ENVIRONMENTAL UNIT
 LANDSCAPE DESIGN & DEVELOPMENT
 1557 MAIL SERVICE CENTER RALEIGH NC 27699-1557
 PH: 919-707-2935 FAX: 919-715-2554
[HTTP://WWW.NCDOT.ORG/DOH/OPERATIONS/DP.CHIEF.ENG/ROADSIDE/](http://www.ncdot.org/DOH/OPERATIONS/DP.CHIEF.ENG/ROADSIDE/)

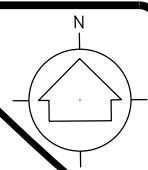
JONESVILLE NC-67 ROUNDABOUT
 YADKIN COUNTY
 CONTRACT #: DK00166
 REV. DESIGNER
Kyle Cooper

PREL DESIGN DATE: JUNE 2015
 CHECKED BY & DATE:
 FINAL DESIGN DATE: JULY 14, 2015

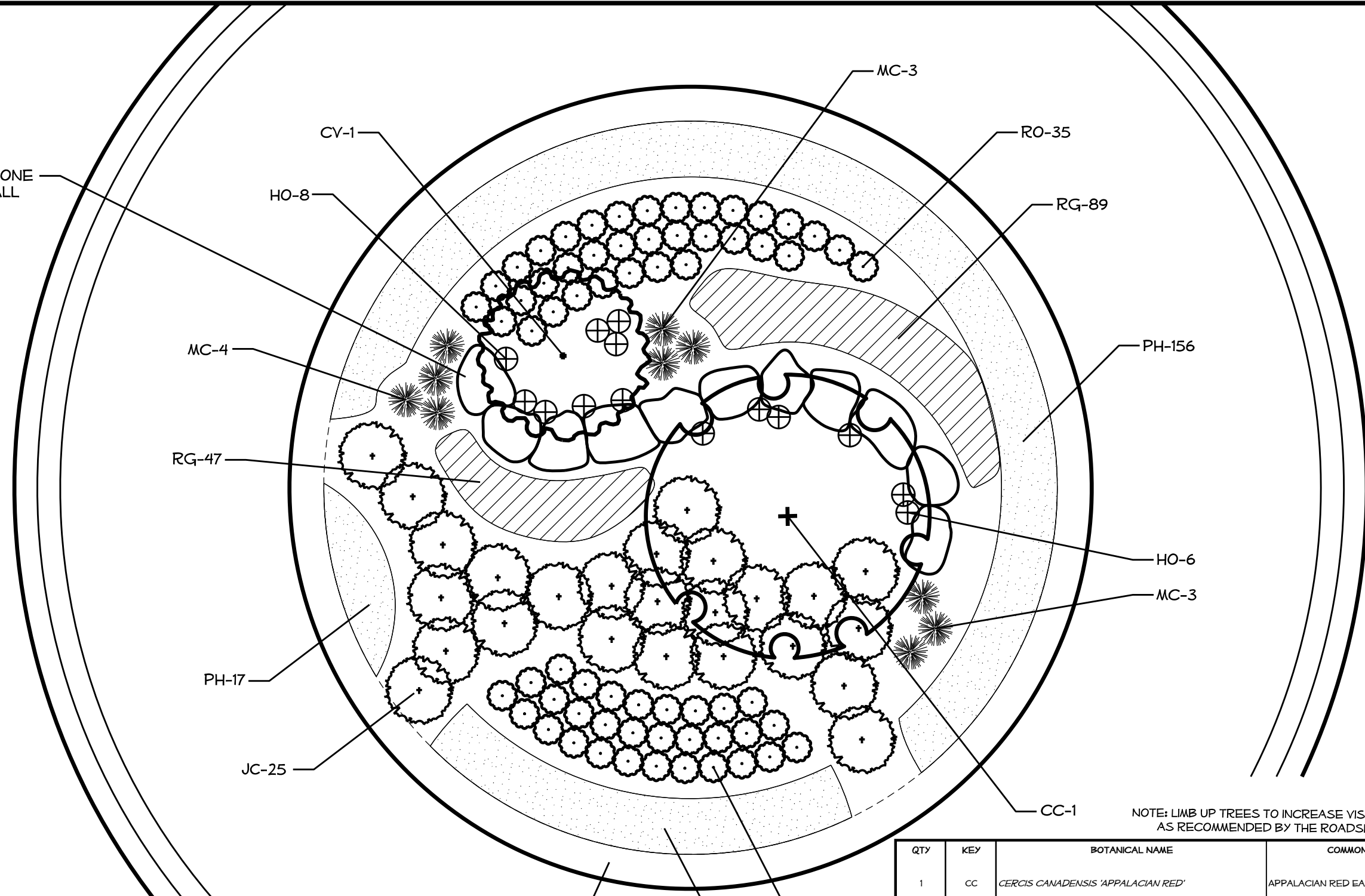
LANDSCAPE PLAN
 LANDSCAPE PLAN SHEET



T.I.P. # - - - - -
 WBS # 3711.3.22
 FED I.D. #
 SHEET NO: TOTAL SHEET NO:
L-3 5



LOW FIELDSTONE BOULDER WALL



3' WIDE INTERIOR SETBACK (MULCHED)

NOTE: LIMB UP TREES TO INCREASE VISIBILITY TO A HEIGHT AS RECOMMENDED BY THE ROADSIDE ENGINEER.

QTY	KEY	BOTANICAL NAME	COMMON NAME	SPACING
1	CC	<i>CERCIS CANADENSIS</i> 'APPALACIAN RED'	APPALACIAN RED EASTERN REDBUD	AS SHOWN
1	CV	<i>CHIONANTHUS VIRGINICUS</i>	FRINGE TREE	AS SHOWN
25	JC	<i>JUNIPERUS CONFERTA</i> 'BLUE PACIFIC'	BLUE PACIFIC SHORE JUNIPER	5' O.C.
65	RO	<i>ROSA</i> 'MEIZORLAND'	WHITE DRIFT ROSE	2.5' O.C.
14	HO	<i>HOSTA</i> 'PRAYING HANDS'	PRAYING HANDS HOSTA	AS SHOWN
10	MC	<i>MUHLENBERGIA CAPILLARIS</i>	PINK MUHLY GRASS	3' O.C.
226	PH	<i>PHLOX SUBULATA</i> 'EMERALD BLUE'	EMERALD BLUE CREEPING PHLOX	2' O.C.
136	RG	<i>RUDBECKIA FULGIDA</i> VAR. <i>SULLYANTII</i> 'GOLDSTRUM'	GOLDSTRUM BLACKEYED SUSAN	18' O.C.

\$\$\$\$\$SYTIME\$\$\$\$\$
\$\$\$\$\$SERNAME\$\$\$\$\$



NCDOT - ROADSIDE ENVIRONMENTAL UNIT
 LANDSCAPE DESIGN & DEVELOPMENT
 1557 MAIL SERVICE CENTER RALEIGH NC 27699-1557
 PH: 919-707-2935 FAX: 919-715-2554
[HTTP://WWW.NCDOT.ORG/DOH/OPERATIONS/DP.CHIEF.ENG/ROADSIDE/](http://www.ncdot.org/DOH/OPERATIONS/DP.CHIEF.ENG/ROADSIDE/)

JONESVILLE NC-67 ROUNDABOUT
 YADKIN COUNTY
 CONTRACT #: DK00166

REV. DESIGNER
Kyle Cooper

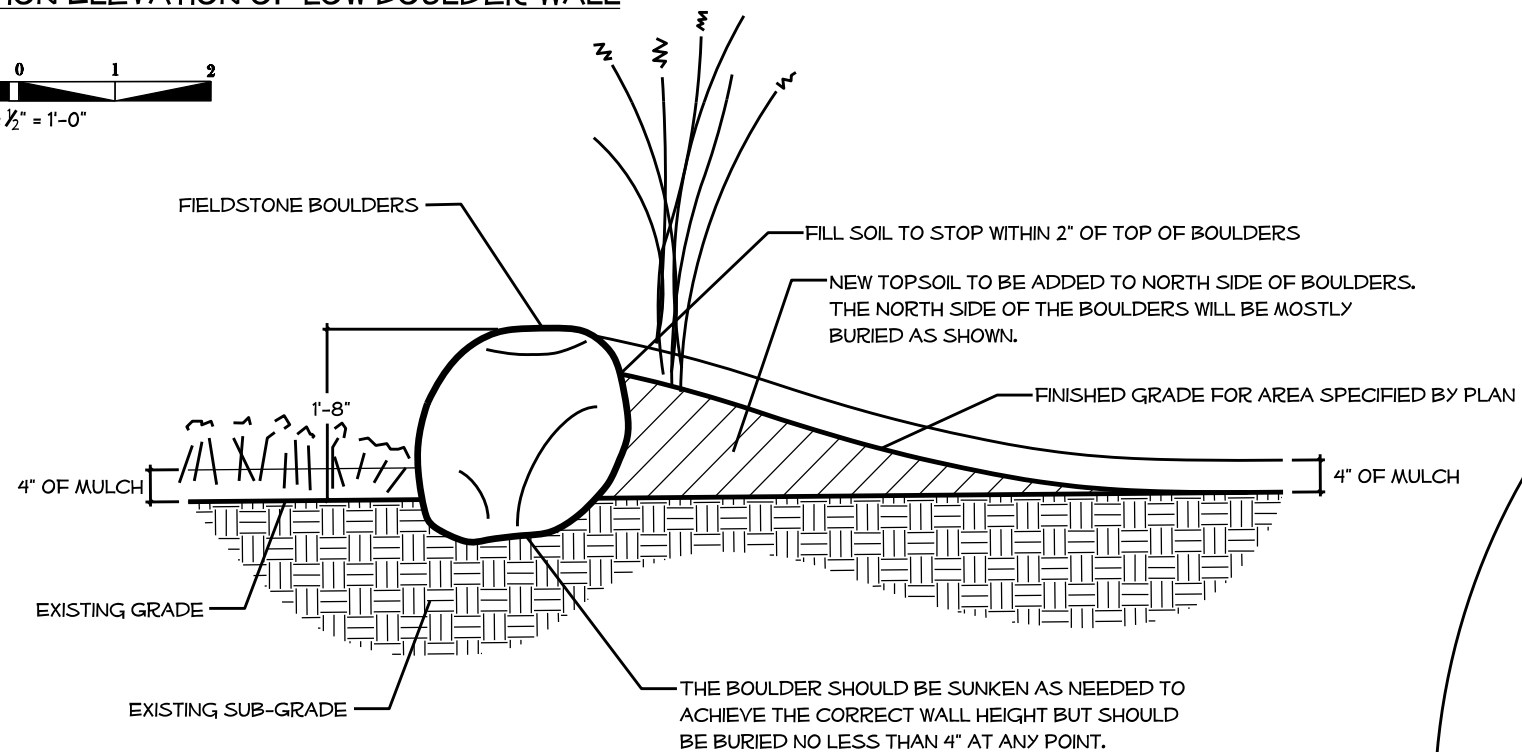
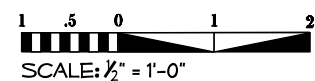
SHEET DESCRIPTION:
 PREL DESIGN DATE: JUNE 2015
 CHECKED BY & DATE:
 FINAL DESIGN DATE: JULY 14, 2015

LANDSCAPE PLAN
 ENLARGED PLAN



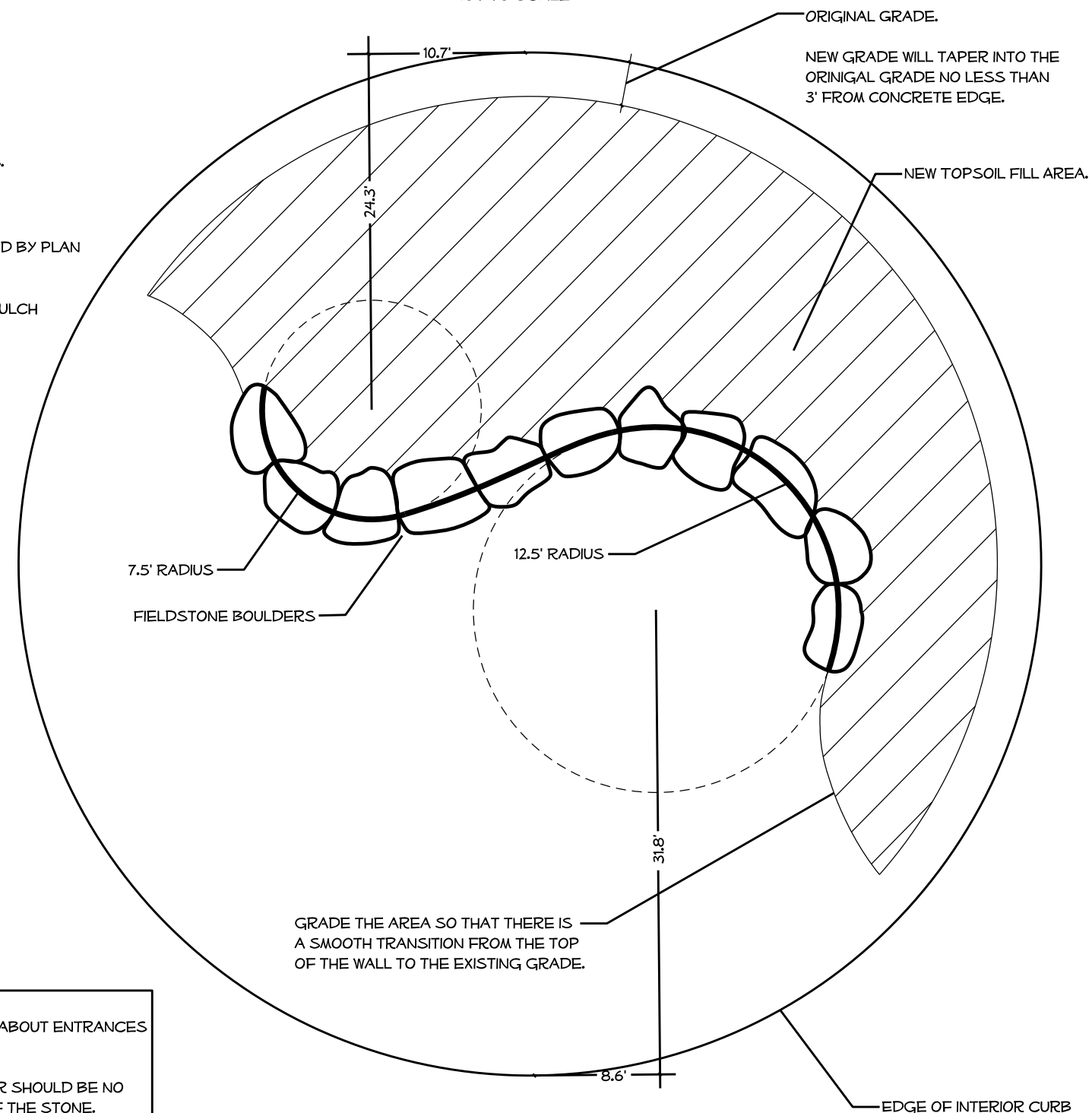
T.I.P. # - - - - -
 WBS # 3711.3.22
 FED I.D. #
 SHEET NO: TOTAL SHEET NO:
L-4 5

SECTION ELEVATION OF LOW BOULDER WALL



PLAN VIEW OF LOW BOULDER WALL

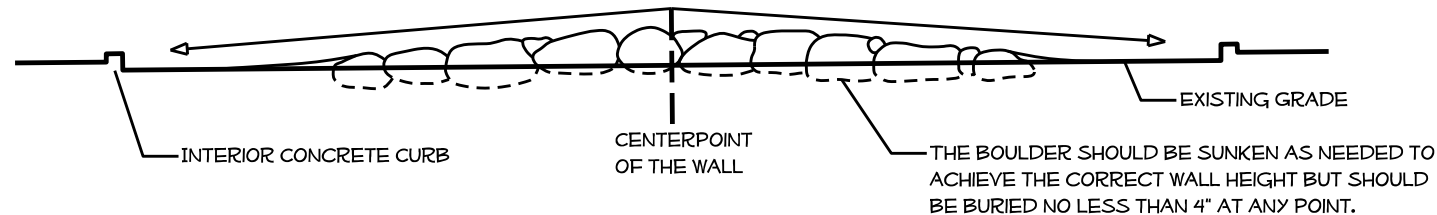
NOT TO SCALE



NORTH ELEVATION OF LOW BOULDER WALL

NOT TO SCALE

CONSTRUCT THE BOULDER WALL SO THAT THE TALLEST POINT IS AT THE MIDPOINT OF THE LENGTH OF THE WALL. THE WALL WILL GRADUALLY TAPER DOWN TO EACH END WHERE THE HEIGHT OF THE WALL SHOULD BE 1' OR LESS.



NOTE:

THE LENGTH OF THE WALL MAY VARY BASED ON BOULDER LENGTH, SO FIELD ADJUSTMENTS MAY BE NEEDED. ORIENT THE WALL BASED ON THE ROUNDABOUT ENTRANCES AS SEEN ON PLAN. THE WALL SHOULD APPEAR TO BE A NATURAL ROCK FORMATION ONCE FINISHED.

SMALL FIELDSTONE BOULDERS THAT ARE TO BE USED FOR THE WALL SHOULD BE LONGER THAN THEY ARE WIDE AND TALL. THE SIZE OF EACH BOULDER SHOULD BE NO TALLER THAN 2' WITH A LENGTH OF AROUND 5' AND A WIDTH OF AROUND 2'. PLACE BOULDERS SO THAT THEY ARE RESTING ON THE BROADEST FACE OF THE STONE. BOULDERS WILL REST FLUSH AGAINST ONE ANOTHER TO FORM A NATURAL BOULDER WALL. THE HEIGHT OF THE WALL SHOULD TAPER DOWN FROM THE CENTER TOWARDS THE ENDS OF THE WALL, WHERE THE HEIGHT OF THE WALL WILL BE 1' OR LESS. SIZE OF BOULDERS WILL VARY. SIZES MUST BE APPROVED BY THE ROADSIDE ENGINEER AND LANDSCAPE DESIGNER.

\$\$\$\$\$SYTIME\$\$\$\$\$
 \$\$\$SUBSERVANCE\$\$\$



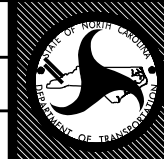
NCDOT - ROADSIDE ENVIRONMENTAL UNIT
 LANDSCAPE DESIGN & DEVELOPMENT
 1557 MAIL SERVICE CENTER RALEIGH NC 27699-1557
 PH: 919-707-2935 FAX: 919-715-2554
 HTTP://WWW.NCDOT.ORG/DOH/OPERATIONS/DP_CHIEF_ENG/ROADSIDE/

JONESVILLE NC-67 ROUNDABOUT
 YADKIN COUNTY
 CONTRACT #: DK00166

REV. DESIGNER
Kyle Cooper

SHEET DESCRIPTION:
 PREL DESIGN DATE: JUNE 2015
 CHECKED BY & DATE:
 FINAL DESIGN DATE: JULY 14, 2015

DETAILS
 LANDSCAPE PLAN SHEET



T.I.P. # -----
 WBS # 3711.3.22
 FED I.D. #
 SHEET NO: L-5
 TOTAL SHEET NO: 5